



WILD LUXURY

-STYLED BY NATURE-

Paddington

5/64" uni saxony

100% PA IMPREL® Opal

RUG
Twinback

POOLHOOGTE
± 8 mm

TOTALE HOOGTE
± 11 mm

POOLGEWICHT
± 1.800 g/m²

TOTAAL GEWICHT
± 2.600 g/m²

AANTAL NOPPEN/M²
± 330 000

LICHTECHTHEID
≥ 5-6

WATERECHTHEID
≥ 4-5

BRANDKLASSE
Cfl-s1 (EN 13501-1)
indien verkleefd

5/64" uni saxony

100% PA IMPREL® Opal

DOSSIER
Twinback

HAUTEUR DU VELOURS
± 8 mm

HAUTEUR TOTALE
± 11 mm

POIDS DU VELOURS
± 1.800 g/m²

POIDS TOTAL
± 2.600 g/m²

NOMBRE DE POINTS/M²
± 330 000

RÉSISTANCE À LA LUMIÈRE
≥ 5-6

RÉSISTANCE À L'EAU
≥ 4-5

CLASSEMENT FEU
Cfl-s1 (EN 13501-1)
en pose collée

5/64" uni Saxony

100% PA IMPREL® Opal

RÜCKEN
Twinback

POLHÖHE
± 8 mm

GESAMTHÖHE
± 11 mm

POLGEWICHT
± 1.800 g/m²

GESAMTGEWICHT
± 2.600 g/m²

NOPPEN/M²
± 330 000

LICHTECHTHEIT
≥ 5-6

WASSERRECHTHEIT
≥ 4-5

BRANDKLASSE
Cfl-s1 (EN 13501-1)
bei vollflächiger Verklebung

5/64" plain saxony

100% PA IMPREL® Opal

BACKING
Twinback

PILE HEIGHT
± 8 mm

TOTAL HEIGHT
± 11 mm

PILE WEIGHT
± 1.800 g/m²

TOTAL WEIGHT
± 2.600 g/m²

TUFT DENSITY/M²
± 330 000

LIGHT FASTNESS
≥ 5-6

WATER RESISTANCE
≥ 4-5

FIRE CLASS
Cfl-s1 (EN 13501-1)
only with full adhesion

EN13041

19

Balta Industries - Kanegemstraat 15 - BE 8700 Tielt
DOP: 1011#IE00CV
Textile Floor Covering EN1307
Notified body 2401

www.baltamediabank.com



EAC

ÉMISSIONS DANS L'AIR INTÉRIEUR

REG. NR
1C8B2DBE

www.pro-dis.info



Onder voorbehoud van wijzingen van de technische specificaties - Sous réserve de modifications techniques - Unter Vorbehalt von technischen Änderungen - All rights reserved to alter technical specification

16	23	24	27	30	33	39	40	43	48	49	52	57	60	61	66	72	78	86	90	92	93	95	96	97	98
ca 4m





WILD LUXURY

-STYLED BY NATURE-



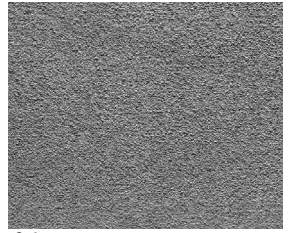
92



90



93



95

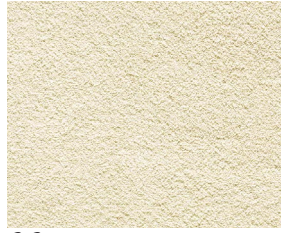
30



39



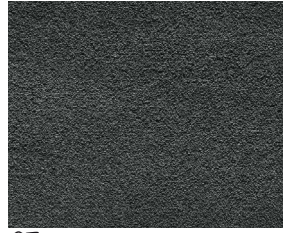
40



33



96



97



43



52



24



78



98



48



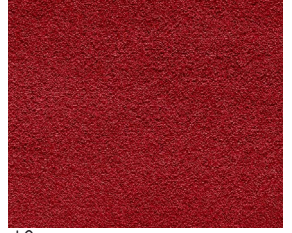
23



27



72



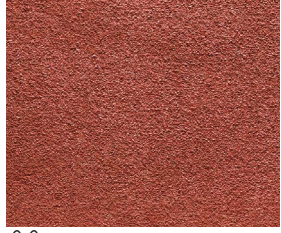
16



49



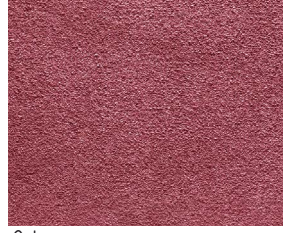
57



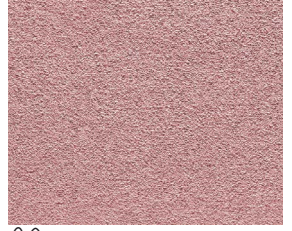
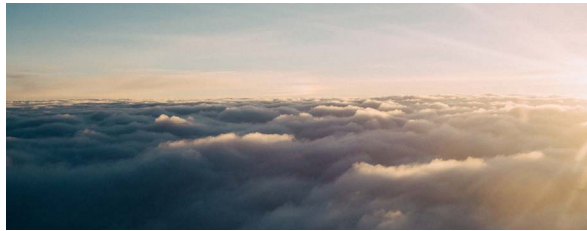
66



86



61



60

Paddington